



FRANCE

LIGHTING SOLUTIONS

2018 Product Catalog

LED, Fluorescent, Neon and Accessories



CONTACT

sales@sfeg.com

800.793.4793

PO Box 300, Fairview, TN 37062

www.sfeg.com/france



History

Founded by Merle and Lester France in 1913, France Lighting Solutions has been providing innovative power solutions for electric signs for over a century.

Advantage

For more than 100 years, France Lighting Solutions has provided customers with innovative solution-based designs, reliable performance and superior service.

Distributors

Our distributors are located throughout the United States and Canada. To find one near you, or to find more information about France Lighting Solutions, please visit www.sfeg.com/france.

Warranties

You can be confident in our products. We offer a 5 year parts warranty and a 1 year labor warranty*.

Stay in Touch

If you would like to reach us directly, please

Email: sales@sfeg.com

Call: 1.800.793.4793

Fax: 1.615.799.3199

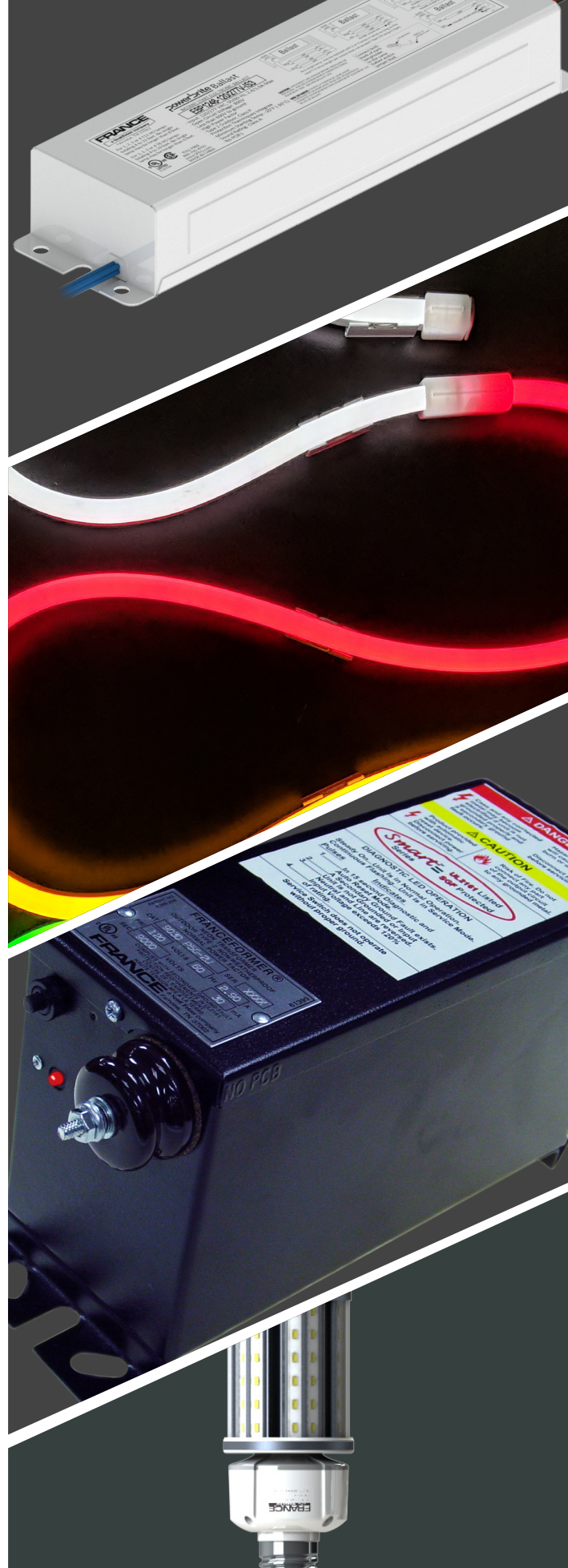


Like us on Facebook:
@francelighting



Follow us on Twitter:
@francelighting

*Some exceptions. Please inquire for details.



OUR PRODUCTS

LED Power Supplies
Page 4-5

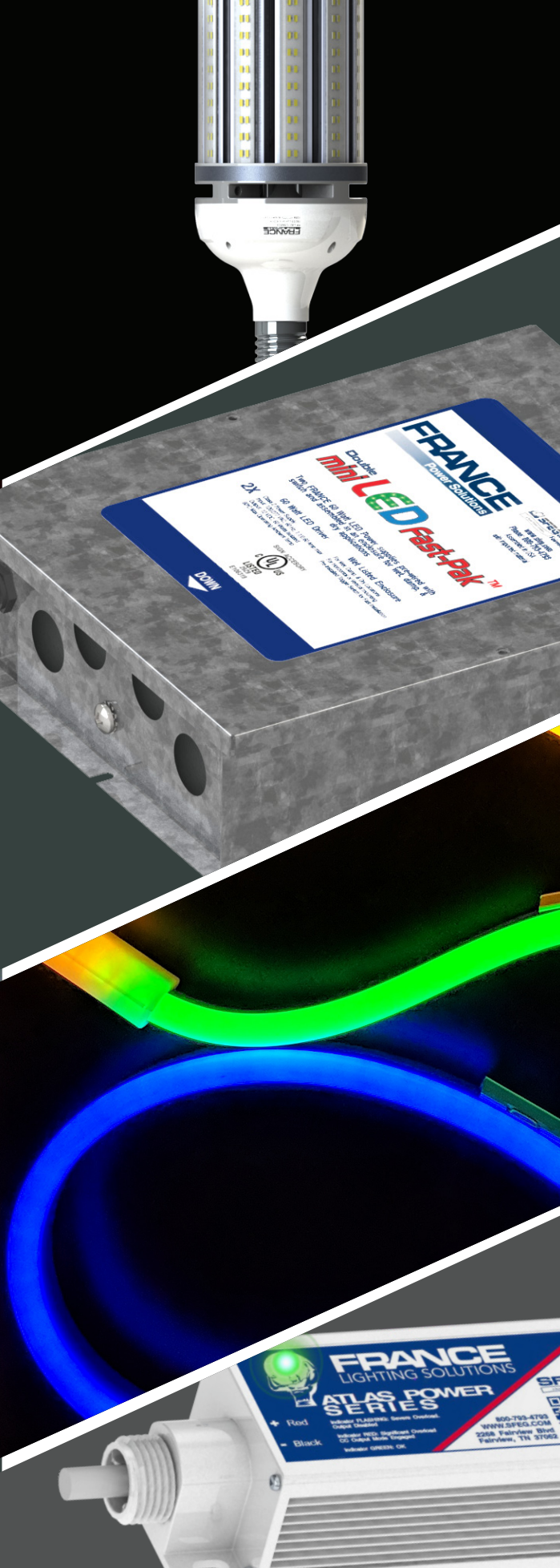
LED Lighting
Page 6-7

LED Fast-Pak Kits
Page 8

Fluorescent Products
Page 9

Neon Products
Page 10

Accessories
Page 11



LED POWER SUPPLIES



DRV-1260-A



DRV-1260-E



DRV-24100-A

LED

Fluorescent

Neon

Accessories

www.sfeg.com/france

sales@sfeg.com

800.793.4793

PO Box 300, Fairview, TN 37062

LED POWER SUPPLIES

Atlas Power Series

Overload LED Indicator Light

Instantly alerts you of an overload or short as driver enters into protection mode to protect against component failure.

No power de-rating required

Supports 100% rated load across the entire operating temperature range.

High electrical efficiency

Enables low energy costs and cool operation in a small package.

Maximum water resistance

IP68 rating and wet-listed conduit fittings. For use in wet, dry or damp applications.

Short Circuit Protection

UL Listed Class 2 & Class P

120/277 Volt 50/60 Hz Input



DRV-1260-A

12 VDC; 60 W; 1 output

DRV-2460-A

24 VDC; 60 W; 1 output

DRV-24100-A

24 VDC; 96 W; 1 output

DRV-12120-A

12 VDC; 120 W; 2 outputs

DRV-24180-A*

24 VDC; 180 W; 2 outputs

Eco Power Series

No power de-rating required

Supports 100% rated load across the entire operating temperature range.

High electrical efficiency

Enables low energy costs and cool operation in a small package.

Water resistance

IP68, for use in dry or damp applications.

Short Circuit Protection

UL Listed Class 2 & Class P

120/277 Volt 50/60 Hz Input



DRV-1230-E

12 VDC; 30 W; 1 output

DRV-2430-E

24 VDC; 30 W; 1 output

DRV-1260-E

12 VDC; 60 W; 1 output

DRV-2460-E

24 VDC; 60 W; 1 output

DRV-24100-E

24 VDC; 96 W; 1 output

DRV-12120-E

12 VDC; 120 W; 2 outputs

DRV-24180-E*

24 VDC; 180 W; 2 outputs

*Release info to be announced at a later date

LED

Fluorescent

Neon

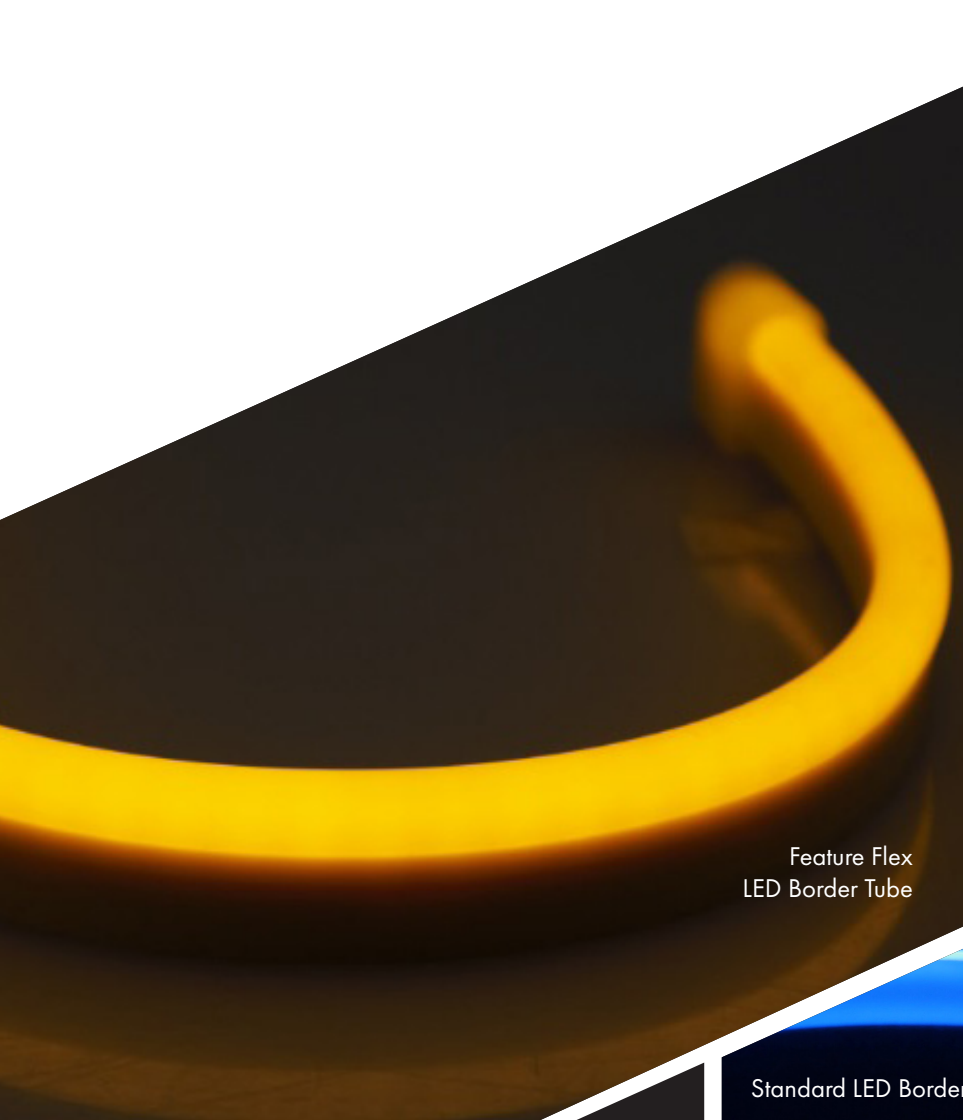
Accessories

www.sfeg.com/france

sales@sfeg.com

800.793.4793

PO Box 300, Fairview, TN 37062



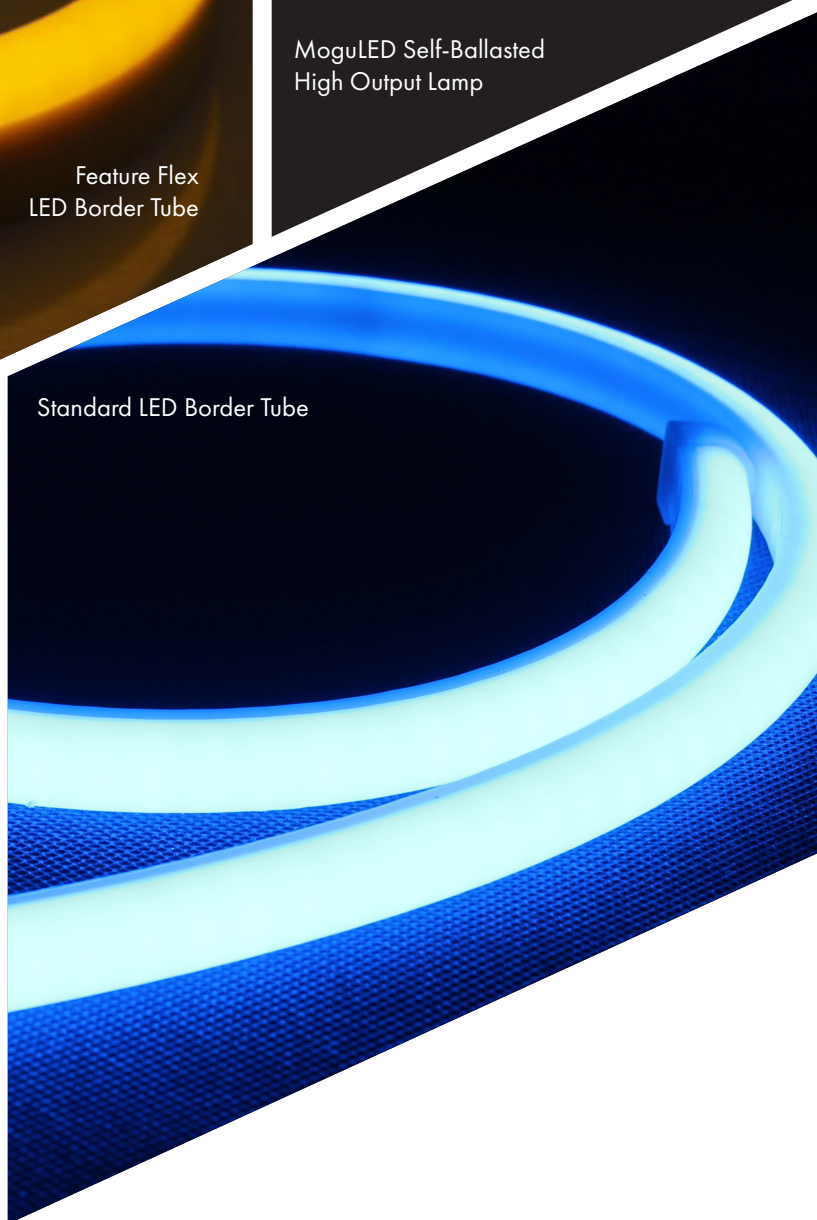
Feature Flex
LED Border Tube



MoguLED Self-Ballasted
High Output Lamp



MoguLED Self-Ballasted
High Output Lamp



Standard LED Border Tube

LED

Fluorescent

Neon

Accessories

www.sfeg.com/france

sales@sfeg.com

800.793.4793

PO Box 300, Fairview, TN 37062

LED LIGHTING

MoguLED Self-Ballasted High Output Lamps

Ready to use as a retrofit for HID

Simply bypass the ballast and connect the MoguLED with the E39 Socket. Instructions included.

Ensures long LED life

Unique aluminum heatsink results in best-in-class operating temperatures.

Diverse applications

Can be used in signs, parking lot lighting and more.

Input

120-277VAC, 50/60Hz, >.90 Power Factor

Output

Omnidirectional, >125 lm/W, >85 CRI
4000K/5000K CCT, Non-dimmable

Environment

For use in Dry or Damp locations.
-40°F to 140°F (-40°C to 60°C)
Can be fully inclosed.



Rated LED Wattage	Dimensions Length x Diameter Weight	HID Equivalent
27W	8.3in x 3.65in 1.43lb	Up to 75W
36W	9.49in x 3.65in 1.65lb	75-125W
45W	10.67in x 3.65in 1.85lb	125-175W
54W	10.67in x 3.65in 1.94lb	175-200W
80W	11.54in x 5.12in 3.64lb	200-250W
100W	12.72in x 5.12in 3.73lb	250-320W
125W	13.9in x 5.12in 4.63lb	320-400W+

LED

Fluorescent

Neon

Accessories

www.sfeg.com/france

sales@sfeg.com

800.793.4793

PO Box 300, Fairview, TN 37062

Feature Flex LED Border Tube

Emulates neon with increased reliability

Safe to use in climate variation. 24V DC low voltage. IP68, for use with wet, damp or dry applications.*

Composed of high quality materials

Eco-friendly, UV- resistant, V-2 flame retardant silicone. Easy to use accessories aid customization.

Great for Signage Lighting

Can be used for outdoor/indoor decoration lighting and contour application. Great for exposed channel letters and neon-style signs.

Minimum bending diameter is 1.97 inches.

Color Options

Blue, green, red, yellow and 6500K white.

* If cut and installed according to directions.



Standard LED Border Tube

Coming soon

Emulates neon with increased reliability

Safe to use in climate variation.

24V DC low voltage.

IP66, for use with damp or dry applications.

Composed of quality materials

V-2 flame retardant silicone, resistant to high UV and climate variation.

Great for Architecture Lighting

Weather resistant for outdoor decoration lighting. May be cut every 2 inches.

Color Options

White, blue, green, red, orange and yellow.



LED FAST-PAK KITS

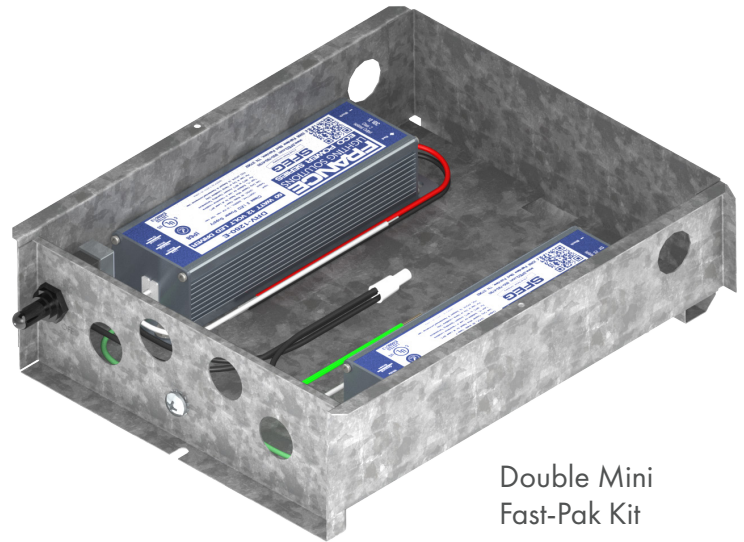
All models feature:

High Quality Construction

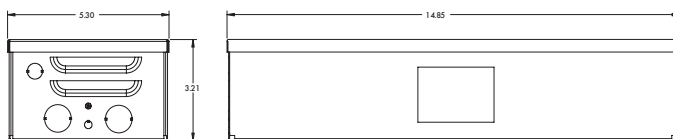
Pre-wired and pre-assembled kit composed of a UL879 listed galvanized steel Power Supply Can and a France Lighting Solutions LED Power Supply. All components mounted within the LED Fast-Pak Kits are reliable France Lighting Solutions sign accessories.

Pre-punched wiring holes

UL recognized plugs supplied for unused wiring holes. Pre-wired with switch and grounding terminal.



Double Mini
Fast-Pak Kit



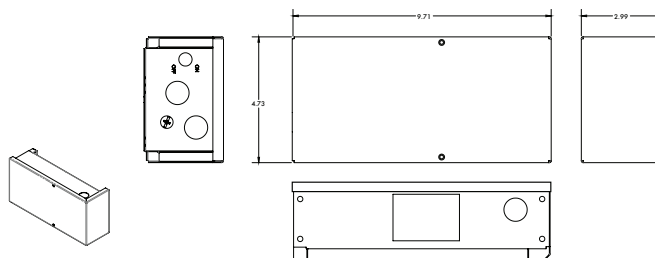
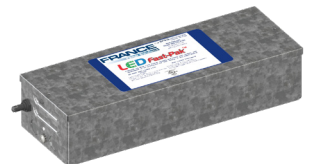
LED Fast-Pak Kit

Contains one premium 60 watt IP68 wet-listed LED power supply.

Horizontal mount only

Input Power 120V/277V

Output Power 12V/60W



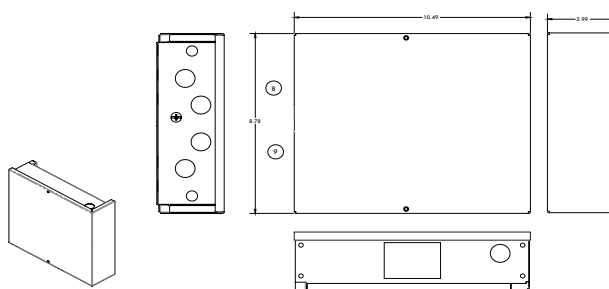
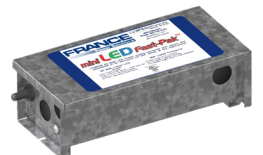
LED Mini Fast-Pak Kit

Contains one compact 60 watt IP68 LED power supply.

Horizontal or Vertical mount

Input Power 120V/277V

Output Power 12V/60W



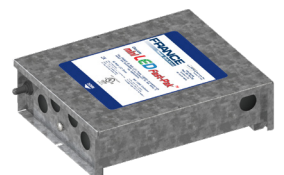
LED Double Mini Fast-Pak Kit

Contains two compact 60 watt IP68 LED power supplies.

Horizontal or Vertical mount

Input Power 120V/277V

Output Power 12V/120W



LED

Fluorescent

Neon

Accessories

www.sfeg.com/france

sales@sfeg.com

800.793.4793

PO Box 300, Fairview, TN 37062

FLUORESCENT LIGHTING

T12 Powerbrite Ballasts

For T12HO and T8HO Lamps

For use with up to 8-foot and 6-foot lamps, respectively. Series lamps allowed on each output.

Withstands environmental conditions

Type 2 Outdoor, Class P thermally protected.

Starting down to 20°F (-30°C)

Title 24 Compliant

30% energy savings over magnetic ballasts

Instant Start

Parallel Lamp Wiring Configuration



	EBP1248 120/277V IS3	EBP1268 120/277 IS3	EBP12410 120/277 IS3
Operating Line Voltage	1 or 2	3 or 4	1 or 2
Min/Max T12HO Lamp Load	4-32 feet	4-48 feet	10-40 feet
Min/Max T8HO Lamp Load	4-24 feet	8-32 feet	8-32 feet
Min/Max T12HO Length/Output	8 feet	8 feet	10 feet
Min/Max T8HO Length/Output	6 feet	6 feet	8 feet
Number of lamps	1 to 4	1 to 6	1 to 4

Reliant Fluorescent Lamps

Highly efficient

Reliant lamps are premium tri-phosphor fluorescent lamps which offer 80% light output at 60,000 hours. 20% less energy consumption.

30% less mercury content and 30% increase in perceptible light output.

Available in 85 CRI

4500K (White Plus Cool White) and 6500K (daylight) color temperatures for excellent color rendering.

For a full list of 4500K and 6500K fluorescent lamps, please visit www.sfeg.com/fluorescent.

T8 Reliant Ballasts

Lightweight, compact design

Adapts easily to small signs or hard to reach spaces.

Withstands environmental conditions

Type 1 Outdoor Damp and Dry Conditions.

Class P thermally protected.

Operating temps: -20°F to 122°F

(-30°C to 50°C)

Instant Start

Parallel Lamp Wiring Configuration



	For max 5-ft lamps		For max 8-ft lamps		
	EB-25A 120/277V	EBR845 120V	EBR828 120V- IS2	EBR848 120V- IS2	EBR868 120V- IS2
Number of lamps	1 or 2	3 or 4	1 or 2	2, 3, or 4	4, 5, or 6
Operating Line Voltage	108-305V	108-132V	108-132V	108-132V	108-132V
Min/max Lamp Load	2-10 feet	6-20 feet	2-16 feet	4-32 feet	8-48 feet

Lampholders

High quality construction

Rated 1000V/660W for T8 & T12 Lamps

UV resistant and flame retardant housing (Lexan)

High strength metal retaining clips

Packaged 250 per box

For T12 Lamps:

WP-LH30-1[†]
WP-LH82*
WP-LH83[†]
WP-LH30-2*

For T8 Lamps:

WP-LH30-1BP[†]
WP-LH82BP*
WP-LH83BP[†]
WP-LH30-2BP*

*Stationary Mount

[^]Spring Loaded

[†]High Quality Stainless Steel Spring

LED

Fluorescent

Neon

Accessories

www.sfeg.com/france

sales@sfeg.com

800.793.4793

PO Box 300, Fairview, TN 37062

NEON PRODUCTS

Neon Transformers, Cold Cathode Transformers, and Cold Cathode Ballasts

All neon transformers with a Secondary Ground Fault Protection (SGFP) share sophisticated self-diagnostics, which indicate the reason for a fault, automatic reset after an intermittent fault, and a service switch that disables SGFP for up to 30 minutes to aid in troubleshooting a fault.



Series	Application and Benefits	Ratings Available	
		Input Voltage	Output Voltage/Current
P5G2E	General neon	120 VAC & 277 VAC	4 kV-15 kV @ 30 & 60 mA
P5G-2UE	Universal, self-adjusting. 9kV replaces 2kV-9kV. 15kV replaces 10.5kV-15kV	120 VAC & 277 VAC	9 kV & 15 kV @ 30 & 60 mA
P5G-2ELP	Low profile for small signs	120 VAC & 277 VAC	@ 30mA
P8G-2B	Easy access to wiring terminals in tight spaces; carrying handles.	120 VAC & 277 VAC	4 kV-15 kV @30 mA 4 kV-9 kV @60 mA
P8G-3UE	Universal, self-adjusting. 9kV replaces 2kV-9kV. 15kV replaces 10.5kV-15kV. Replaces transformers with HV terminal on 1 or opposite sides.	120 VAC	9 kV & 15 kV @30 mA
P5KA2NG-2E	Needs no additional enclosure with conduit knock-outs for primary and secondary wiring. Internal carry handle and power switch.	120 VAC & 277 VAC	4 kV-15 kV @30 mA
		120 VAC	7.5 kV-15 kV @60mA
P5KA2NG-2UE	Same as P5KA2NG-2E, plus universal and self-adjusting. 9kV replaces 2kV-9kV. 15kV replaces 10.5kV-15kV.	120 VAC & 277 VAC	9 kV & 15 kV @ 30 & 60 mA
P6KA2NG	Cold Cathode Transformer. Used with large cold cathode lamps, cove lighting, etc.	120 VAC & 277 VAC	5 kV-9 kV @120 mA
P2G	Low profile for small signs, no SGFP	120 VAC	5 kV & 6 kV
PBKMG-51	Electrode receptable type. Use in channel letters with no GTO. No SGFP.	120 VAC	3 kV-15 kV @30 mA 2 kV-9 kV @60 mA
		277 VAC	4 kV-15 kV @30 mA 4 kV-9 kV @ mA
SEG-U	Indoor signs where space is limited. No SGFP.	120 VAC	3 kV @20 mA 6 kV @ 25 mA
Cold Cathode Ballast	Each model drives 8 to 16 feet of cold cathode tubing	120 VAC & 277 VAC	990 VAC @150 mA & 200 mA

LED

Fluorescent

Neon

Accessories

www.sfeg.com/france

sales@sfeg.com

800.793.4793

PO Box 300, Fairview, TN 37062

ACCESSORIES



Glass housings for Neon
#100, #200, #300, #300P



Electric Wiring and Accessories
15mm brass electrode buttons
1/2" porcelain federal bushing
Cable supports- metal screw
12mm and 15mm brass electrode caps
20 amp toggle switches with boot
Switch safety locking plates
1" louvers with screen
2" louvers with screen



Tube Supports and Accessories
1lb and 5lb copper tie wire spools
1 3/4" tube support brass base
Sili-Grip 1 3/4" glass tube support
brass base



Ever Klear Tube Supports
10mm 3/8"
30mm 1 3/16"
40mm 1 9/16"



Hypo Applicators
Hypo 25 Applicator: 23 gauge
Hypo 49 Applicator: 18 gauge



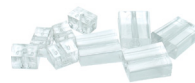
1000V 14 GA Ballast Wiring
BWYellow
BWBlue
BWRed
BWOrange
BWGreen
BWBrown
BWBlack
BWWhite
BWBlue/White
BWOrange/Black



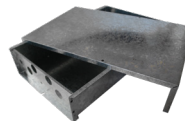
Neon Fabrication Accessories
Neon Hand Block
7.5"x3"x1"



Letter mounting
For 10/24 threaded studs:
Small clear acrylic blocks
1/2"x1/2"x3/4"
Small clear acrylic mounting pads
1 1/2" diameter
Large clear acrylic mounting pads
2 1/2" diameter



Aluminum Studs
1", 2", 3", 4", 6": 10/24 threads



LED Power Supply Cans
14.9"x5.3"x3.2" & 14.9"x9.5"x3.25"



Neon Transformer Can
7"x7"x18" Top off



Pattern Materials
Blue Standard Carbon Paper
Nonbestos Neon Pattern Paper
Burroughs 1" Grid Pattern Paper

LED

Fluorescent

Accessories

Accessories

**For more information about any of our products,
please contact your local distributor
or email us at sales@sfeg.com.**

www.sfeg.com/france

800.793.4793

PO Box 300, Fairview, TN 37062

Created September 2018